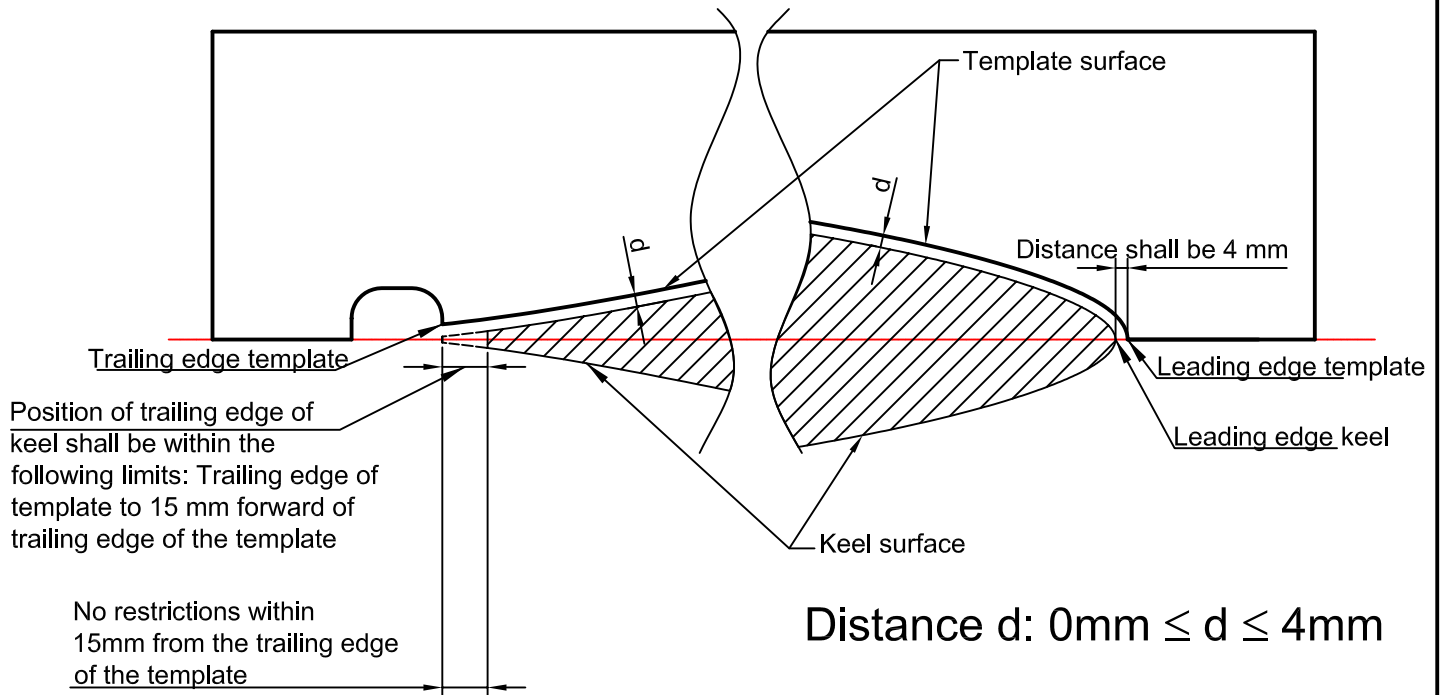


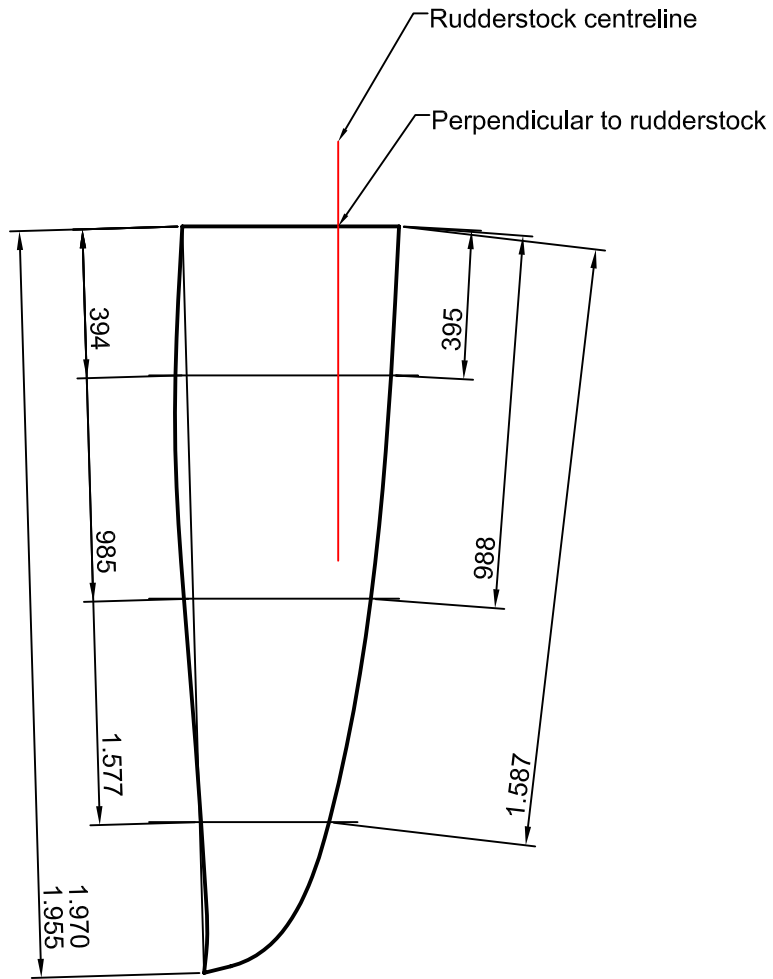


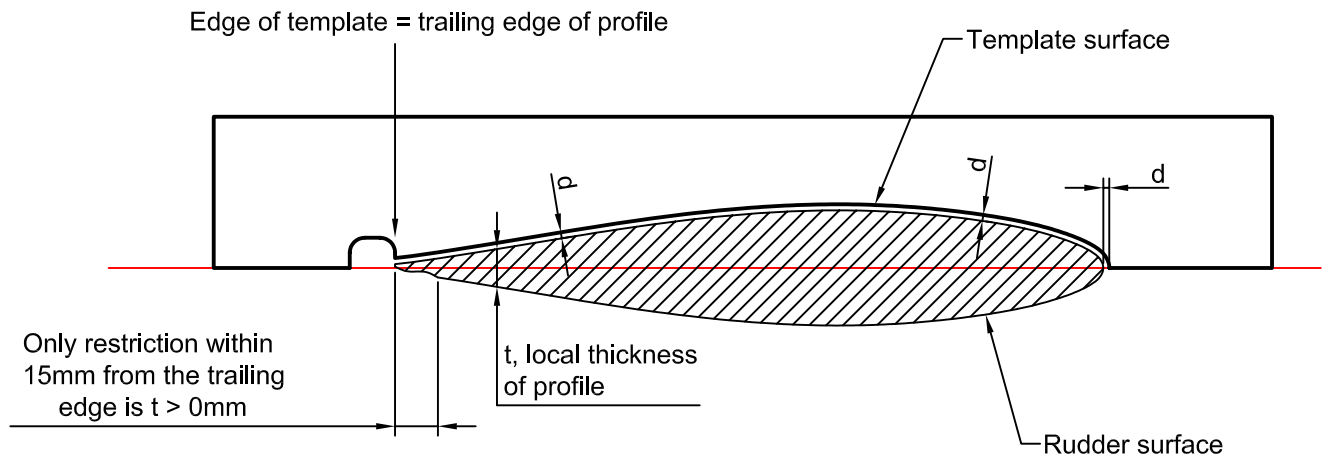
Principle of maximum templates for the X-41 keel



 <p>X-Yachts WORLD CLASS SINCE 1979</p> <p>Fjordgøvevej 21 - Box 104 - DK-6100 Haderslev - Denmark Tel.int +45 74 52 10 22 - Fax.int.+45 74 53 03 97 e-mail: info@x-yachts.com - www.x-yachts.com</p>	Yacht 	Description Position of max templates Keel	
	Drawing Number H4 - 1/2 A	Scale -	Date Issued 2008.15.04



Principle of maximum rudder templates for the X-41



Distance d : $0\text{mm} \leq d \leq 4\text{mm}$

X-Yachts
WORLD CLASS SINCE 1979

Fjordogøvej 21 - Box 104 - DK-6100 Haderslev - Denmark
Tel.int +45 74 52 10 22 - Fax.int.+45 74 53 03 97
e-mail: info@x-yachts.com - www.x-yachts.com

Yacht

X-41

Description

Position of max templates
Rudder

Drawing Number

H4 - 2/2 A

Scale

-

Date Issued

2008.15.04