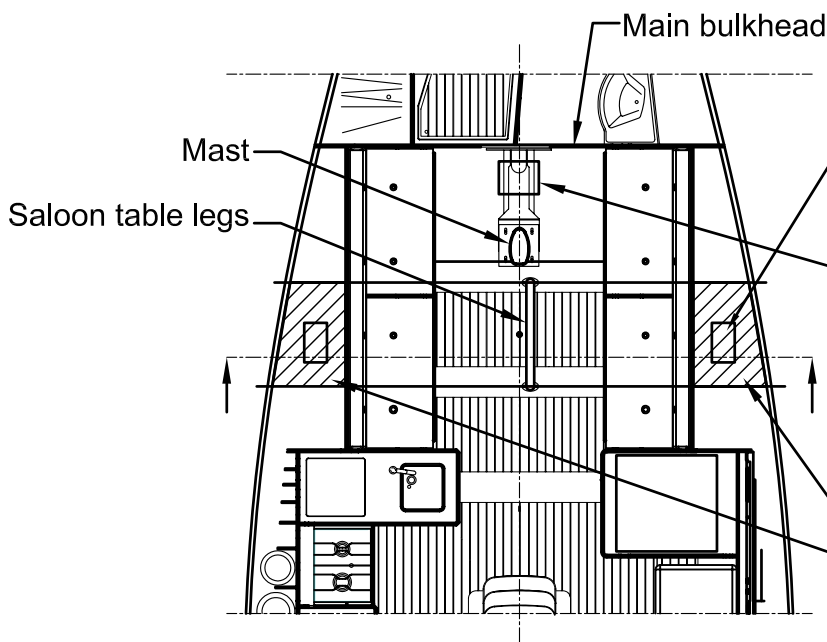




1/3 of the total corrector weight is to permanently attach under the shelves in the main cabin. The longitudinal placement is constrained by legs of the saloon table. See drawing.



2/3 of the total corrector weight is to permanently attached to the steelframe between the mast and the main bulkhead.

Area of allowed placement of correction weight

 <p><b>X-Yachts</b> WORLD CLASS SINCE 1979</p> <p>Fjordagervej 21 - Box 104 - DK-6100 Haderslev - Denmark Tel.int +45 74 52 10 22 - Fax.int.+45 74 53 03 97 e-mail: info@x-yachts.com - WWW.x-yachts.com</p>	Yacht	Description	
		Position of correction weights	
	Drawing Number	Scale	Date Issued
	H6	1:50	2008.06.05